

# 2010 ANNUAL PROFILE

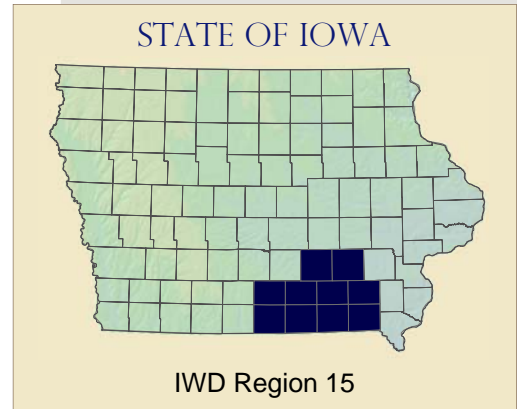
# REGION 15

## IOWA WORKFORCE DEVELOPMENT

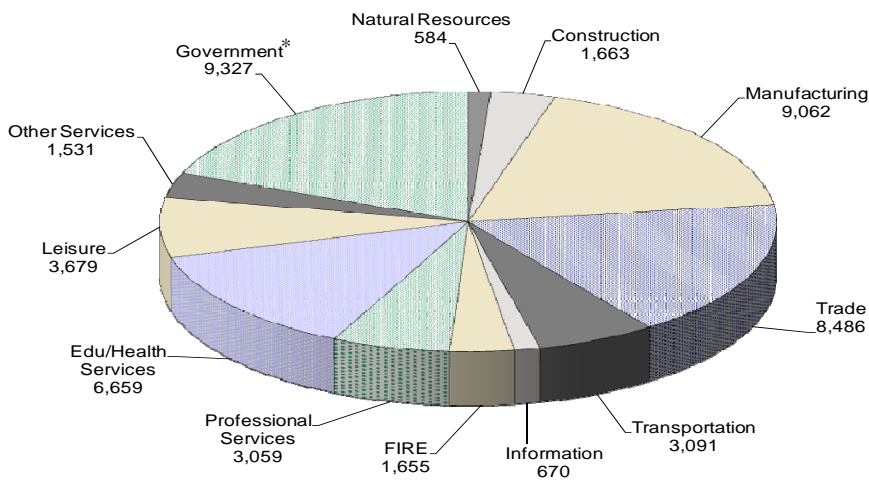
### Executive Summary

As of 2009, Iowa Workforce Development's (IWD) Region 15 largest private industry was Manufacturing, representing 18.28 percent (9,062) of the region's total covered employment of 49,582. The region's total employment decreased by 4.47 percent since 2008, and the average annual wage increased by 0.80 percent to \$32,049 for all industries.

IWD's Region 15 average weekly wage for all industries was \$616 for 2009. This was an increase of 0.82 percent since 2008. The highest average weekly wage for a private sector was in Manufacturing, averaging \$847. Between 2008 and 2009, the Ag/Natural Resources and Mining sector reported the largest percentage increase in average weekly wage of 4.93 percent (\$27).



### 2009 Industry Breakout by Employment



Source: Quarterly Census of Employment and Wages

### Ten Largest Employers by Employment

*Listed Alphabetically for Private Industry*

| Name of Company                    | Industry                     |
|------------------------------------|------------------------------|
| Barker Specialty Products LLC      | Manufacturing                |
| Cargill Inc                        | Manufacturing                |
| Cargill Meat Solutions             | Manufacturing                |
| Deere & Company                    | Manufacturing                |
| Eneric Petroleum Corp              | Professional & Business Svcs |
| Hy-Vee Food Stores                 | Warehousing                  |
| Maharishi University of Management | Education                    |
| Musco Sports Lighting LLC          | Manufacturing                |
| Ottumwa Regional Health Center     | Health Services              |
| Wal-Mart Stores                    | Retail Trade                 |

Source: ALMIS Employer Database

### QUICK FACTS

#### Counties Included in Iowa Workforce Development's Region 15

- |           |           |
|-----------|-----------|
| Appanoose | Mahaska   |
| Davis     | Monroe    |
| Jefferson | Van Buren |
| Keokuk    | Wapello   |
| Lucas     | Wayne     |

#### 2009 Covered Employment (QCEW)

|                         | %                        |
|-------------------------|--------------------------|
| Total Employment        | 49,582 3.43 <sup>1</sup> |
| Average Weekly Wage     | \$616 86.15 <sup>2</sup> |
| Largest Private Sector: |                          |
| Manufacturing           | 9,062 4.47 <sup>3</sup>  |

<sup>1</sup> Percent is based on statewide covered employment of 1,445,613

<sup>2</sup> Percent is based on statewide average weekly wage of \$715

<sup>3</sup> Percent is based on statewide covered employment in specified sector

#### Census Statistics

|                                 |         |
|---------------------------------|---------|
| IWD Region 15 Population (2009) | 135,318 |
|---------------------------------|---------|

# 2010 IOWA WORKFORCE DEVELOPMENT REGION 15 PROFILE

## 2008 - 2009 Covered Employment and Reporting Units by Industry

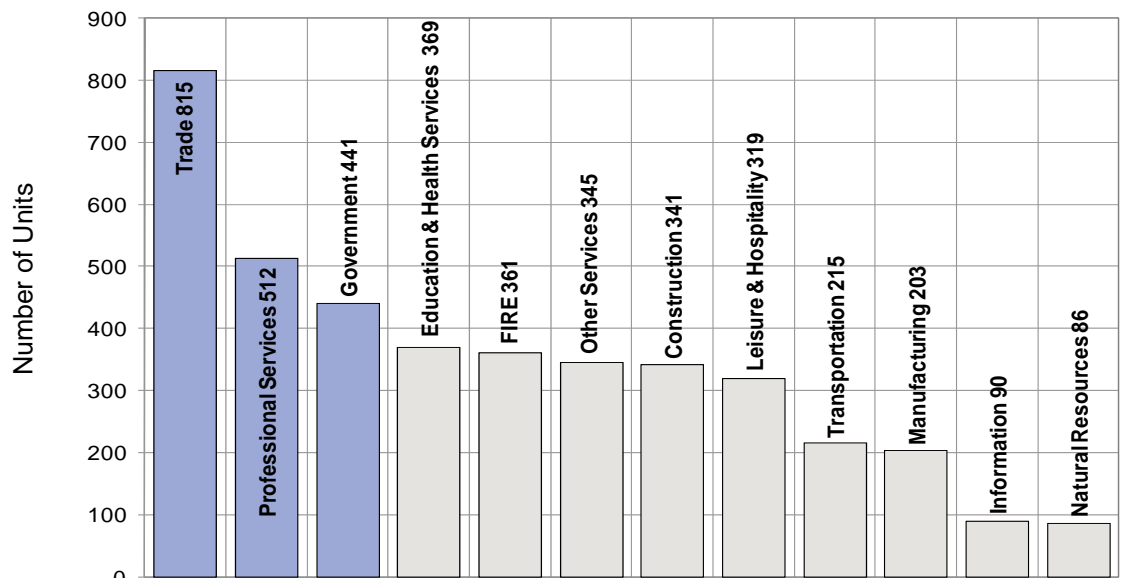
A Unit is Defined as a Worksite

| Reporting Units |       |          |                                     | Employment |        |          |
|-----------------|-------|----------|-------------------------------------|------------|--------|----------|
| 2008            | 2009  | % Change |                                     | 2008       | 2009   | % Change |
| 4,116           | 4,114 | -0.05%   | Total All Industries                | 51,903     | 49,582 | -4.47%   |
| 3,667           | 3,673 | 0.16%    | Private Business                    | 42,435     | 40,256 | -5.13%   |
| 81              | 86    | 6.17%    | Ag/Natural Resources & Mining       | 559        | 584    | 4.47%    |
| 336             | 341   | 1.49%    | Construction                        | 1,890      | 1,663  | -12.01%  |
| 212             | 203   | -4.25%   | Manufacturing                       | 10,390     | 9,062  | -12.78%  |
| 839             | 815   | -2.86%   | Trade                               | 8,902      | 8,486  | -4.67%   |
| 247             | 241   | -2.43%   | Wholesale Trade                     | 2,000      | 1,879  | -6.05%   |
| 592             | 574   | -3.04%   | Retail Trade                        | 6,902      | 6,607  | -4.27%   |
| 224             | 215   | -4.02%   | Transportation & Utilities          | 3,176      | 3,091  | -2.68%   |
| 100             | 90    | -10.00%  | Information                         | 738        | 670    | -9.21%   |
| 359             | 361   | 0.56%    | Finance, Insurance, and Real Estate | 1,723      | 1,655  | -3.95%   |
| 497             | 512   | 3.02%    | Professional & Business Services    | 3,079      | 3,059  | -0.65%   |
| 361             | 369   | 2.22%    | Education & Health Services         | 6,693      | 6,659  | -0.51%   |
| 313             | 319   | 1.92%    | Leisure & Hospitality               | 3,624      | 3,679  | 1.52%    |
| 328             | 345   | 5.18%    | Other Services                      | 1,526      | 1,531  | 0.33%    |
| 449             | 441   | -1.78%   | Government                          | 9,468      | 9,327  | -1.49%   |
| 77              | 75    | -2.60%   | State                               | 535        | 515    | -3.74%   |
| 256             | 254   | -0.78%   | Local                               | 8,317      | 8,191  | -1.51%   |
| 116             | 112   | -3.45%   | Federal                             | 616        | 621    | 0.81%    |

Source: Quarterly Census of Employment and Wages

## Reporting Units by Industry in 2009

A Unit is Defined as a Worksite



Trade - Wholesale & Retail Trade  
F.I.R.E. - Finance, Insurance, & Real Estate

Natural Resources - Agriculture, Natural Resources, & Mining

Source: Quarterly Census of Employment and Wages

### QUICK FACTS

IWD Region 15's  
Greatest Number of  
Worksites

Wholesale & Retail  
Trade  
815

Professional Services  
512

Government  
441

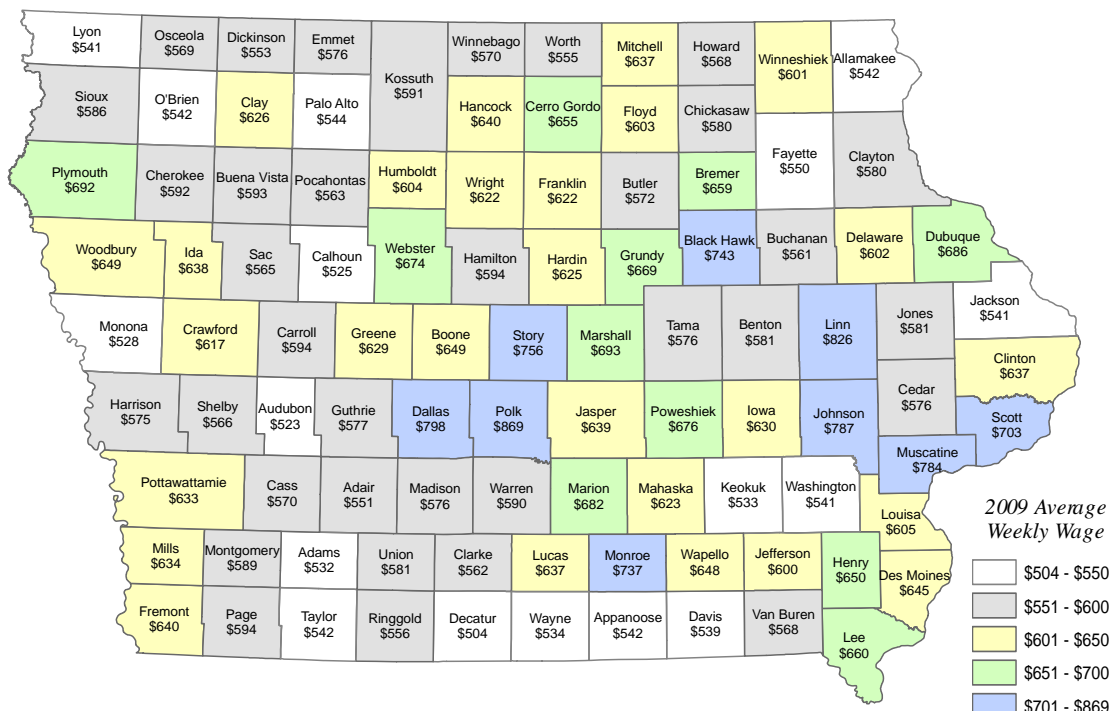
# 2010 IOWA WORKFORCE DEVELOPMENT REGION 15 PROFILE

## 2008—2009 Average Annual and Weekly Wage by Industry

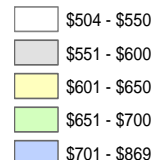
| Average Annual Wage |           |          |                                  | Average Weekly Wage |        |          |
|---------------------|-----------|----------|----------------------------------|---------------------|--------|----------|
| 2008                | 2009      | % Change |                                  | 2008                | 2009   | % Change |
| \$ 31,795           | \$ 32,049 | 0.80%    | Total All Industries             | \$ 611              | \$ 616 | 0.82%    |
| \$ 31,323           | \$ 31,242 | -0.26%   | Private Business                 | \$ 602              | \$ 601 | -0.17%   |
| \$ 28,511           | \$ 29,892 | 4.84%    | Ag/Natural Resources & Mining    | \$ 548              | \$ 575 | 4.93%    |
| \$ 37,398           | \$ 37,205 | -0.52%   | Construction                     | \$ 719              | \$ 715 | -0.56%   |
| \$ 43,150           | \$ 44,038 | 2.06%    | Manufacturing                    | \$ 830              | \$ 847 | 2.05%    |
| \$ 24,453           | \$ 24,422 | -0.13%   | Trade                            | \$ 470              | \$ 470 | 0.00%    |
| \$ 37,681           | \$ 38,326 | 1.71%    | Wholesale Trade                  | \$ 725              | \$ 737 | 1.66%    |
| \$ 20,619           | \$ 20,466 | -0.74%   | Retail Trade                     | \$ 397              | \$ 394 | -0.76%   |
| \$ 38,868           | \$ 38,980 | 0.29%    | Transportation & Utilities       | \$ 747              | \$ 750 | 0.40%    |
| \$ 29,465           | \$ 29,736 | 0.92%    | Information                      | \$ 567              | \$ 572 | 0.88%    |
| \$ 37,477           | \$ 36,117 | -3.63%   | Finance, Insurance, Real Estate  | \$ 721              | \$ 695 | -3.61%   |
| \$ 35,866           | \$ 35,765 | -0.28%   | Professional & Business Services | \$ 690              | \$ 688 | -0.29%   |
| \$ 27,364           | \$ 28,233 | 3.18%    | Education & Health Services      | \$ 526              | \$ 543 | 3.23%    |
| \$ 10,272           | \$ 10,386 | 1.11%    | Leisure & Hospitality            | \$ 198              | \$ 200 | 1.01%    |
| \$ 20,323           | \$ 20,623 | 1.48%    | Other Services                   | \$ 391              | \$ 397 | 1.53%    |
| \$ 33,911           | \$ 35,534 | 4.79%    | Government                       | \$ 652              | \$ 683 | 4.75%    |
| \$ 47,694           | \$ 51,084 | 7.11%    | State                            | \$ 917              | \$ 982 | 7.09%    |
| \$ 32,333           | \$ 33,947 | 4.99%    | Local                            | \$ 622              | \$ 653 | 4.98%    |
| \$ 43,252           | \$ 43,574 | 0.74%    | Federal                          | \$ 832              | \$ 838 | 0.72%    |

Source: Quarterly Census of Employment and Wages

## Average Weekly Wage for All Industries by County Annual 2009



2009 Average Weekly Wage



### QUICK FACTS

#### Average Weekly Wage Comparisons

IWD Region 15  
\$616

Rank  
Among All 15  
IWD Regions  
11th

Statewide  
\$715

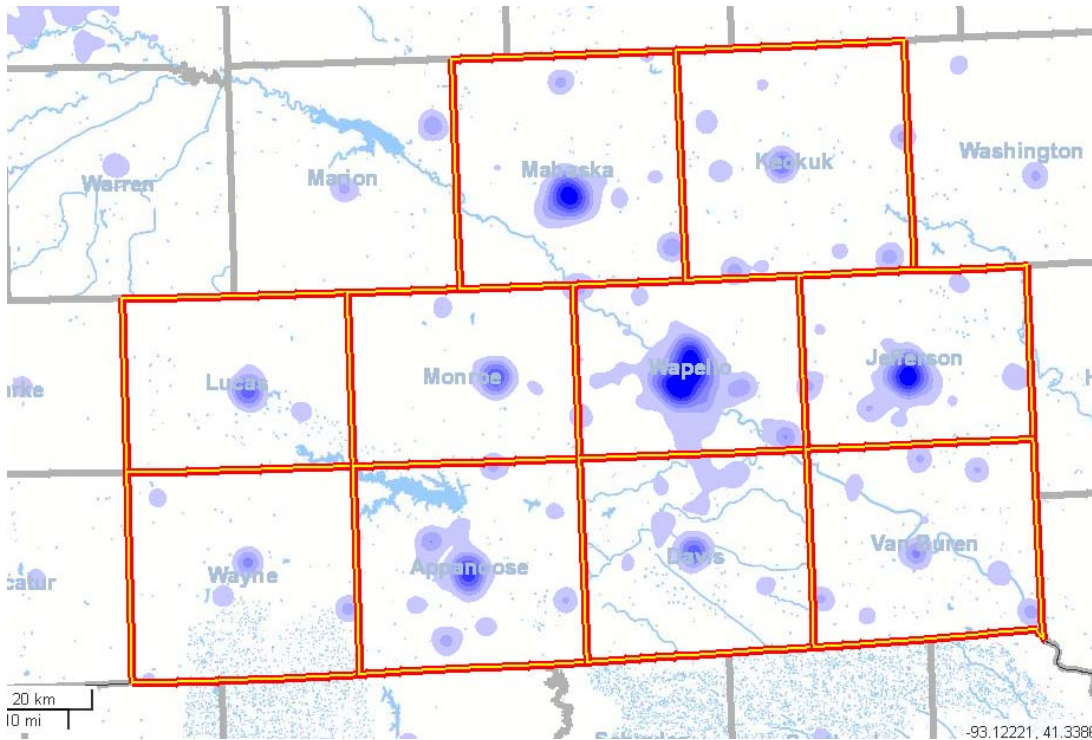
Nation  
\$876

Source: Quarterly Census of Employment and Wages



# 2010 IOWA WORKFORCE DEVELOPMENT REGION 15 PROFILE

**ON THE MAP — Region 15**  
Where Workers Live that are Employed in the Region



For an online tour of the application, please follow this link: [http://lehd.dsd.census.gov/led/datatools/elearning/On\\_the\\_Map/index.htm](http://lehd.dsd.census.gov/led/datatools/elearning/On_the_Map/index.htm).

## QUICK FACTS

**'On the Map'**  
Interactive Mapping  
Application

As of 2008, there were 47,588 primary jobs in this region.

23.0 percent of workers (10,938) live in Wapello County and work in Region 15.

16.4 percent (7,789) of the region's workers live in Ottumwa, IA.

**ON THE MAP Statistics — Region 15**  
Distribution of Worker's Age and Monthly Earnings—Primary Jobs

| <b>Total Primary Jobs</b>           |        |        |        |        |        |        |
|-------------------------------------|--------|--------|--------|--------|--------|--------|
|                                     | 2008   |        | 2005   |        | 2002   |        |
|                                     | Count  | Share  | Count  | Share  | Count  | Share  |
| <b>Total Primary Jobs</b>           | 47,588 | 100.0% | 47,112 | 100.0% | 46,737 | 100.0% |
| <b>Jobs by Worker Age</b>           |        |        |        |        |        |        |
|                                     | 2008   |        | 2005   |        | 2002   |        |
|                                     | Count  | Share  | Count  | Share  | Count  | Share  |
| <b>Age 29 or younger</b>            | 11,981 | 25.2%  | 11,909 | 25.3%  | 11,930 | 25.5%  |
| <b>Age 30 to 54</b>                 | 25,484 | 53.6%  | 26,466 | 56.2%  | 27,318 | 58.5%  |
| <b>Age 55 or older</b>              | 10,123 | 21.3%  | 8,737  | 18.5%  | 7,489  | 16.0%  |
| <b>Jobs by Earnings Paid</b>        |        |        |        |        |        |        |
|                                     | 2008   |        | 2005   |        | 2002   |        |
|                                     | Count  | Share  | Count  | Share  | Count  | Share  |
| <b>\$1,250 per month or less</b>    | 12,578 | 26.4%  | 13,789 | 29.3%  | 15,213 | 32.6%  |
| <b>\$1,251 to \$3,333 per month</b> | 21,834 | 45.9%  | 22,885 | 48.6%  | 23,417 | 50.1%  |
| <b>More than \$3,333 per month</b>  | 13,176 | 27.7%  | 10,438 | 22.2%  | 8,107  | 17.3%  |

Source: Local Employment Dynamics, On the Map: <http://lehdmap.dsd.census.gov/>. For definitions and instruction on this mapping application, visit <http://lehdmap.dsd.census.gov/help.pl> and select any of the "Help" topics.

## QUICK FACTS

**'On the Map'**  
Reports

One of the reports generated from 'On the Map' displays total primary jobs of 47,588 in Region 15 and the distribution of age and monthly earning of the workers.

45.9 percent of Region 15 workers earn from \$1,251 to \$3,333 per month.

21.3 percent of the region's workers are age 55 and older.

## 2010 IOWA WORKFORCE DEVELOPMENT REGION 15 PROFILE

### Top 20 Growing Industries by Employment 2008 - 2018

| Industry Description                                      | NAICS Code | 2008 Estimated Employment | 2018 Projected Employment | Total Growth | Percent Change |
|---|------------|---------------------------|---------------------------|--------------|----------------|
| Warehousing and Storage                                   | 493        | 1,450                     | 1,910                     | 460          | 31.7%          |
| Educational Services                                      | 616        | 6,020                     | 6,465                     | 445          | 7.4%           |
| Self Employed and Unpaid Family Workers                   | 671        | 6,375                     | 6,755                     | 380          | 6.0%           |
| Ambulatory Health Care Services                           | 621        | 1,575                     | 1,940                     | 365          | 23.2%          |
| Professional, Scientific, and Technical Services          | 541        | 1,435                     | 1,755                     | 320          | 22.3%          |
| Nursing and Residential Care Facilities                   | 623        | 1,990                     | 2,300                     | 310          | 15.6%          |
| Hospitals   | 626        | 2,510                     | 2,765                     | 255          | 10.2%          |
| Social Assistance   | 624        | 1,010                     | 1,255                     | 245          | 24.3%          |
| Specialty Trade Contractors                               | 238        | 1,205                     | 1,435                     | 230          | 19.1%          |
| Food Services and Drinking Places                         | 722        | 2,900                     | 3,090                     | 190          | 6.6%           |
| Administrative and Support Services                       | 561        | 1,280                     | 1,460                     | 180          | 14.1%          |
| Religious, Grantmaking, Civic, Professional Organizations | 813        | 1,405                     | 1,570                     | 165          | 11.7%          |
| Food Manufacturing  | 311        | 3,295                     | 3,430                     | 135          | 4.1%           |
| General Merchandise Stores                                | 452        | 1,340                     | 1,465                     | 125          | 9.3%           |
| Truck Transportation                                      | 484        | 960                       | 1,060                     | 100          | 10.4%          |
| Health and Personal Care Stores                           | 446        | 360                       | 430                       | 70           | 19.4%          |
| Building Material and Garden Equipment                    | 444        | 610                       | 670                       | 60           | 9.8%           |
| Credit Intermediation and Related Activities              | 522        | 1,015                     | 1,065                     | 50           | 4.9%           |
| Amusement, Gambling, and Recreation Industries            | 713        | 290                       | 340                       | 50           | 17.2%          |
| Construction of Buildings                                 | 236        | 440                       | 485                       | 45           | 10.2%          |

*Source: Long-Term Industry Projections*

### "Hot Jobs" in Region 15 2006 - 2016

| Occupational Title  | 2006 Estimated Employment | 2016 Projected Employment | Region 15 2009 Mean Annual Wage | Annual Growth Rate (%) |
|---|---------------------------|---------------------------|---------------------------------|------------------------|
| <b>Bachelor's Degree</b>  |                           |                           |                                 |                        |
| Accountants and Auditors  | 580                       | 645                       | \$ 55,904                       | 1.1                    |
| Insurance Sales Agents  | 470                       | 540                       | \$ 45,214                       | 1.5                    |
| <b>Postsecondary Education (Long-term on-the-job training or work experience in a related occupation)</b> |                           |                           |                                 |                        |
| Registered Nurses   | 1,280                     | 1,565                     | \$ 46,977                       | 2.2                    |
| Licensed Practical and Licensed Vocational Nurses   | 245                       | 275                       | \$ 33,629                       | 1.0                    |
| Automotive Service Technicians and Mechanics  | 320                       | 360                       | \$ 28,699                       | 1.3                    |
| Maintenance and Repair Workers, General   | 605                       | 695                       | \$ 31,983                       | 1.5                    |
| <b>High School Diploma or Equivalent (Moderate-term on-the-job training)</b>                              |                           |                           |                                 |                        |
| Truck Drivers, Heavy and Tractor-Trailer  | 1,345                     | 1,570                     | \$ 36,012                       | 1.7                    |
| Customer Service Representatives  | 500                       | 595                       | \$ 30,145                       | 2.0                    |
| Bookkeeping, Accounting, and Auditing Clerks  | 1,135                     | 1,270                     | \$ 29,865                       | 1.2                    |
| Pharmacy Technicians  | 145                       | 195                       | \$ 25,908                       | 3.8                    |
| <b>Less than High School Diploma (Short-term on-the-job-training)</b>                                     |                           |                           |                                 |                        |
| Truck Drivers, Light or Delivery Services   | 525                       | 590                       | \$ 30,578                       | 1.2                    |
| Landscaping and Groundskeeping Workers  | 470                       | 510                       | \$ 25,504                       | 1.0                    |

*Occupations are selected based on growth factors in the IWD Region 15 2006-2016 occupational projections and the 2009 IWD Region 15 mean annual wage. The occupations listed have a higher growth rate than the IWD Region 15 average of 1.0% and a higher than average IWD Region 15 wage of \$25,367.*



# 2010 IOWA WORKFORCE DEVELOPMENT REGION 15 PROFILE

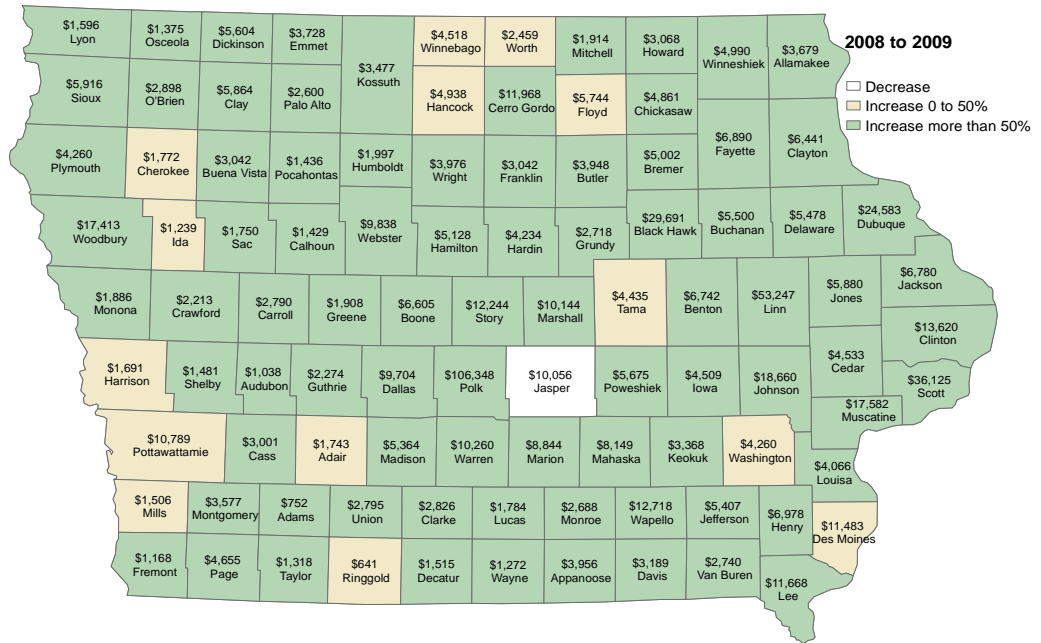
## QUICK FACTS

### Annual 2009 UI Benefits

UI Benefits for Iowa increased from \$426.5 million in 2008 to \$806.2 million in 2009, an increase of 89.0 percent.

UI Benefits in Region 15 increased from \$19.4 million in 2008 to \$45.3 million in 2009, an increase of 133.5 percent.

## Total Unemployment Insurance (UI) Benefit Payouts Annual 2009



Note: Dollar values are in thousands. Total UI Benefit payouts include benefits paid under the Iowa unemployment insurance program and federal benefits paid under the unemployment compensation for federal employees and service personnel programs. Benefit payout is based on claimant's county of residence. Figures do not include the Temporary Emergency Unemployment Compensation program (TEUC).

Source: Unemployment Insurance Statistical Data, [www.iowaworkforce.org/lmi/uistats/index.html](http://www.iowaworkforce.org/lmi/uistats/index.html)

## CONTACT INFO

Iowa Workforce Development, Employment Statistics Bureau

1000 E Grand Ave  
Des Moines, IA 50319  
800-532-1249

Fax: 515-281-8195  
iwd.lmi@iwd.state.ia.us  
www.iowaworkforce.org

Equal opportunity employer/program. Auxiliary aids and services are available upon request to individuals with disabilities.

TTY 515-281-4748;  
1-800-831-1399



## For Additional Information about Region 15—Visit our Website! <http://iwin.iwd.state.ia.us/iowa/Regions?area=000015>